

HSV-600 Series Handheld OTDR



- HSV-600 series OTDR is designed by Hong Kong Honserv Limited with U.S technology
- 7-inch, outdoor enhanced touch screen for you to get visual GUI
- Handy, lightweight, powerful, 12-hour autonomy unprecedented testing experience is very suitable for fiber optic test environment
- With outstanding optical performance, exquisite appearance, accurate and stable internal parameters, the first choice for fiber optic project companies

**12-hour
Battery
Life**

**Fiber
Path
(iOLM)**

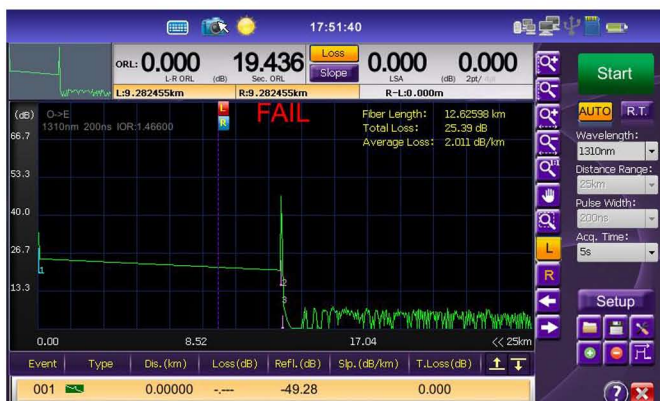
**FTTX
/PON
OTDR**

**7-inch
Touch
Screen**

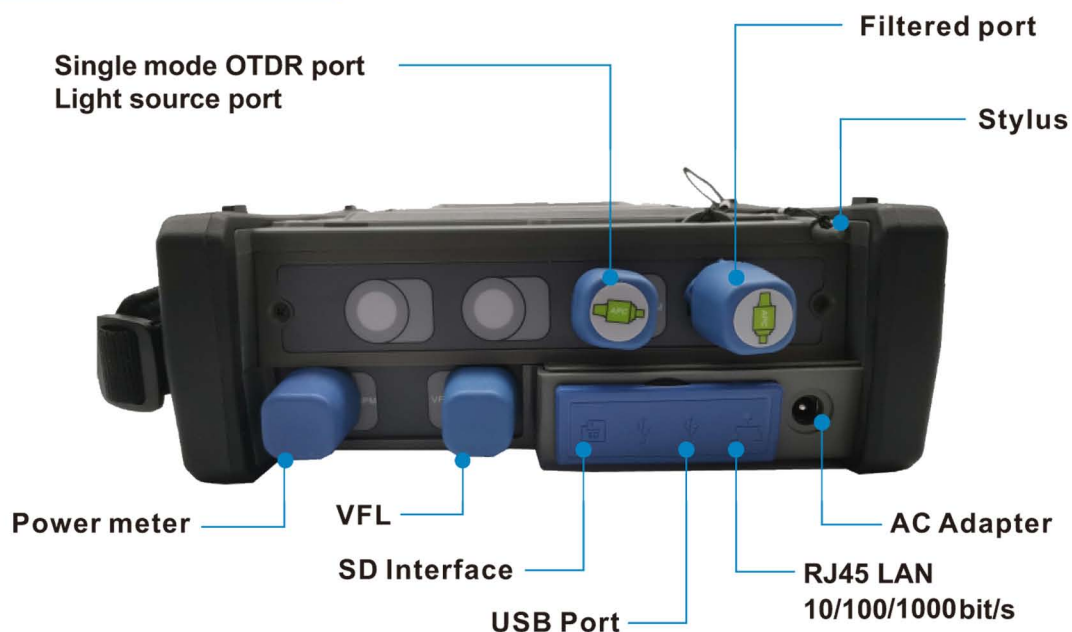
Specifications

1. Applicable fiber: SM FTTx/PON
2. extra-short event dead zone
3. Up to 42/40dB High Dynamic Range
4. Memory storage > 80,000 OTDR traces
5. With built-in Power meter & VFL: fiber path (iOLM) functions
6. 800 x 480 TFT 7inch outdoor-enhanced touch screen
7. Built-in lithium battery with high capacity for 12hours run time

Outstanding optical performance index



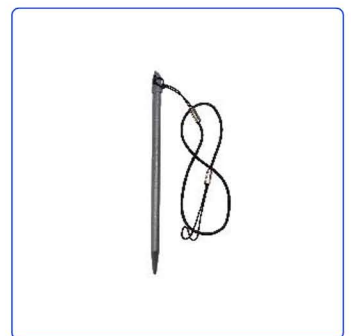
Product Details



Packing Information

1. HSV-600 series OTDR
2. AC Adapter
3. Built-in lithium battery
4. Touch pen
5. Extra SC Connector for power meter
6. Calibration Certificate
7. Certificate of compliance
8. Bag with sholder strap

Configuration List



Support four interface fiber types

FC



SC



ST



LC



Technical Parameters

Model	HSV-690	HSV-700
Wavelength(nm)	1310/1550/1625	1310/1550/1650
Wavelength accuracy(nm)	±20nm	±20nm
Reflectance accuracy(dB)	±2	
Dynamic range(dB)	40/39/35	42/40/35
Event deadzone(m)	0.5	
Attenuation deadzone(m)	2.5	
Pulse width(ns)	3 ~ 20,000	
Distance range(km)	0.1 ~ 400	
Sampling resolution	4cm ~ 12.6m	
Sampling points	256000	
Distance Accuracy(m)	$\pm(0.75m+0.005\% \times \text{Fiber length} + \text{sampling resolution})$	
Group of refractive index range	1.30000 ~ 1.70000	
Linearity	0.03	
Loss threshold(dB)	0.001	
Loss of resolution(dB/km)	0.001	
Measuring time range	5s ~ 60min , real time	
File format	SOR, WORD, EXCEL, PDF, CSV, BMP, JPG	
Distance unit	km, m, ft, mile	
Real refresh rate	4/s	
Optical power meter	calibrated wavelength: 1310/1550nm Wavelength(nm): 850/980/1300/1310/1490/1550/1610 Dynamic range: -70dBm ~ +10dBm	
VFL	650nm ± 10nm	
FIP	250X amplifier(option)	
Optical source	1310/1550nm, -11dBm	
Display	7inch TFT touch screen	
Interface	USB x 2, RJ45 x 1, LAN 10/100/1000bit/s, SD x 1	
Storage	27G (128G expandable)	
Battery	7.4V 5300mAh Lithium battery pack, 39.22Wh 12hours continuous working time	
Overall power consumption	<3W	
Power supply	AC/DC adapter: Input 100-240V 50 ~ 60Hz	
Circumstance	Operating temperature -10℃ ~ +50℃, storage temperature -40℃ ~ +70℃	
Dimension	196*172*72mm	
Weight(with battery)	<1.5kg	
Language	Chinese, English, Spanish, French, Russian, German, Korean, Italian, Arabic	